

2025-2026 School Year

Archway Trivium New Family Orientation

What Differentiates Great Hearts from a District School?

- **Our core purpose is to cultivate the minds and hearts of students through the pursuit of truth, goodness and beauty**
 - Intellectual AND moral formation
- **Classical Education:**
 - Socratic Method
 - Ideas are explored through inquiry
 - Helps our students practice humility, courage and boldness
 - 3 stages (Trivium) of learning:
 - Grammar (foundational knowledge/facts)
 - Dialectic (students learn how to question, using logic)
 - Rhetoric (students learn how to express & defend what he thinks)
- **Liberal Arts:**
 - A preparatory education for all (Adler: the best education for all – all deserve the rich “cream”)

Practical Info

In the next
few slides, we
will give you
an overview
of:

- School Calendar
- Informational School Events
- Parent-Teacher Conferences
- Kinder Screening
- Uniform Requirements
- Student Drop-off and Pick-Up Procedure
- Homework Time Estimates
- Items to purchase over the summer
- Reading targets and Summer practice
- Needed Time & Financial Contributions

2024-25 Archway Trivium Academy Calendar

JULY							AUGUST							JANUARY						
S	M	T	W	T	F	S	S	M	T	W	T	F	S	S	M	T	W	T	F	S
1	2	3	4	5	6	5	Meet the Teacher							1	2	3	4			
7	8	9	10	11	12	13	7	First Day of School- Wednesday Early Dismissal						5	6	7	8	9	10	11
14	15	16	17	18	19	20	13	Curriculum Night						12	13	14	15	16	17	18
21	22	23	24	25	26	27	16	Half Day: ACT In-Service						19	20	21	22	23	24	25
28	29	30	31				27	School Picture Day						26	27	28	29	30	31	1
AUGUST							SEPTEMBER							FEBRUARY						
S	M	T	W	T	F	S	S	M	T	W	T	F	S	S	M	T	W	T	F	S
				1	2	3	2	No School: Labor Day/R & R						2	3	4	5	6	7	8
4	5	6	7	8	9	10	24	Half Day: GH In-Service						9	10	11	12	13	14	15
11	12	13	14	15	16	17		School Picture Retake Day						16	17	18	19	20	21	22
18	19	20	21	22	23	24	4	OCTOBER						23	24	25	26	27	28	1
25	26	27	28	29	30	31	7-11	No School: ACT In-Service. End of Quarter 1												
								No School: Fall Break						MARCH						
							14-15	No School: Parent/Teacher Conferences						S	M	T	W	T	F	S
							16	School Resumes						2	3	4	5	6	7	8
1	2	3	4	5	6	7	25	Half Day: ACT In-Service						9	10	11	12	13	14	15
8	9	10	11	12	13	14		NOVEMBER						16	17	18	19	20	21	22
15	16	17	18	19	20	21	1	Great Hearts Gala						23	24	25	26	27	28	29
22	23	24	25	26	27	28	5	Half Day (Archway Concert Day)						30	31					
29	30						11	No School: Veterans Day						APRIL						
							27-29	No School: Thanksgiving Break/R & R						S	M	T	W	T	F	S
								DECEMBER								1	2	3	4	5
							17-19	Half Day Dismissal: Finals						6	7	8	9	10	11	12
6	7	8	9	10	11	12	19	End of Quarter 2 / Semester 1						13	14	15	16	17	18	19
13	14	15	16	17	18	19	20-31	No School: Winter Break						20	21	22	23	24	25	26
20	21	22	23	24	25	26		JANUARY						27	28	29	30			
27	28	29	30	31			1-3	No School: Winter Break						MAY						
							6	School Resumes						S	M	T	W	T	F	S
							20	No School: MLK, Jr./Civil Rights Day						4	5	6	7	8	9	10
								FEBRUARY						11	12	13	14	15	16	17
3	4	5	6	7	8	9	7	Half Day: GH In-Service						18	19	20	21	22	23	24
10	11	12	13	14	15	16	17	No School: Presidents' Day/R & R						25	26	27	28	29	30	31
17	18	19	20	21	22	23		MARCH						JUNE						
24	25	26	27	28	29	30	6	End of Quarter 3						S	M	T	W	T	F	S
							7	No School: ACT In-Service						1	2	3	4	5	6	7
							10-14	No School: Spring Break						8	9	10	11	12	13	14
1	2	3	4	5	6	7	17	School Resumes						15	16	17	18	19	20	21
8	9	10	11	12	13	14		APRIL						22	23	24	25	26	27	28
15	16	17	18	19	20	21	18	No school						29	30					
22	23	24	25	26	27	28	25	Half Day: ACT In-Service												
29	30	31					28	No School: R & R Weekend						SCHOOL HOURS						
								MAY						Half Day Kinder M-F : 7:50AM - 11:50AM						
							6	Half Day (Archway Concert Day)						M,T,Th,F : 7:50AM - 3:00PM						
							20-22	Half Day Dismissal: Finals						Wednesday Dismissal: 1:25PM						
							22	End Quarter 4 / Semester 2						Half Day Dismissal : 11:50AM						
							22	Last Day of School						OFFICE HOURS						
								Early Release Wednesday						M,T,Th,F : 7:30AM - 3:30PM						
								Half Day Dismissal						Wednesday : 7:30AM - 4:50PM						
								No School						Half Days : 7:30AM - 12:30PM						
								Conferences: No School												

All information is subject to change for the 2024-25 academic school year.

approved 3.21.24

Please note:

- Students get out early every Wednesday– 1:25pm
- Some days are half days– 11:50am
- Meet the Teacher is August 4th
- Parent-teacher conferences for ALL students – October 13th - 14th
- Students are out of school for extended days:
 - Oct. 3 - Oct. 14
 - Dec. 19 - Jan. 2
 - March 6 - 13

Parent-Teacher Conferences

Every parent meets with their child's teachers for a 15mn conference between October 13-14

- If at any time a teacher notices a significant change in a student's performance, he or she will request a parent-teacher conference. This includes the week following Winter break and the week following Spring break, however we encourage these conferences to take place throughout the school year.
- If at any time a parent is concerned about his or her child's progress, we encourage the parent to reach out to the teacher and request a conference. The likely times that the teacher will have available is from 7-7:20am or from 3:30-4pm.
- Other than the week following Fall break, conferences can be set up at any time and initiated by either the parent or teacher. We encourage a team approach to helping the child succeed in school.

Informational Parent Events in August

Meet the Teacher – August 4:
There is not a presentation.
This is simply a time for
students to meet their new
teacher, in a comfortable
setting with parents.

Curriculum Night &
Spalding/Singapore Night–
August 12: An overview of
grade-level curriculum will be
presented by teachers
(subjects that are taught,
what some of the units will
be, homework expectations
for each subject, etc.).

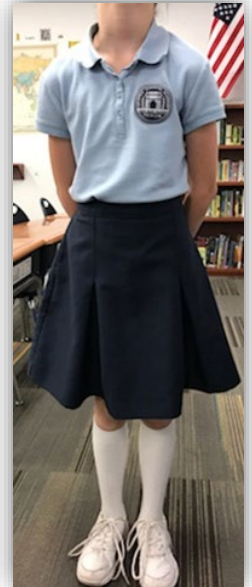
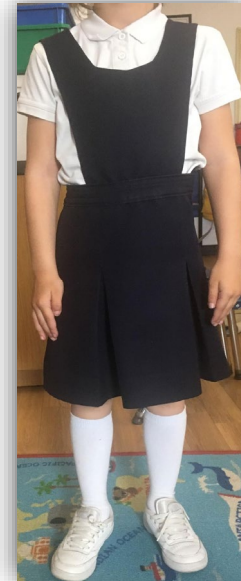
Kinder Screening

- You should have received an email about Kinder Screening.
- It will take place on April 25th
- Kinder screening helps us better determine and prepare for the learning and developmental needs of your child. It also helps us with class placement.

Uniforms – Approved for Girls

Please see handbook for approved uniforms

- Jumpers, skirts or skorts *must* match one of the styles below &/or be sold by our vendors
- Navy tights/leggings
- Solid white or black socks
- Solid white or black athletic shoes
- We do not change shoes for PE



Uniforms – **Approved** for Girls

Please see handbook for approved uniforms

- Jumpers/skirts/skorts **must** match one of the styles below &/or be sold by our vendors
- Navy tights or leggings
- Solid white or black socks
- Solid white or black athletic shoes
- We don't change shoes for PE





Uniforms – **Not** Approved for Girls

Please see handbook for approved uniforms

- No skinny pants
- No jumpers that are different than our **one** approved jumper
- No skirts/skorts that are different from our **one** approved in handbook
- No non-uniform sweaters, sweatshirts or outerwear.
- No white or black tights/leggings (navy only)
- No colored socks
- No show socks are not permitted (the ankle needs to be completely covered)



Uniforms – **Approved** for Boys

Please see handbook for approved uniforms

- Black or brown belts required (optional for K-1)
- Solid white or black socks
- Solid white or black athletic shoes
- We don't change shoes for PE





Uniforms – **Not** Approved for Boys

Please see handbook for approved uniforms

- No block letters on shoes or colored portions thicker than 1/8" stripe around bottom of shoe.
- No pants or shorts that do not look identical to approved uniform pants/shorts (free of logos)
- No non-uniform sweaters, sweatshirts or outerwear.



Uniforms Shoes – **Approved**



Please see handbook for approved uniforms

- Black or brown belts required (optional for K-1)
- Solid white or solid black socks
- Solid white or solid black athletic shoes
- We don't change shoes for PE, which is athletic shoes are required for all students

Uniforms Shoes – **Not** Approved



Please see handbook for approved uniforms

- No white or black tights/leggings (navy only)
- No colored socks
- No show socks are not permitted (the ankle needs to be completely covered)



Uniforms Shoes – **Not** Approved

Please see handbook for approved uniforms

- No block letters on shoes or colored portions thicker than 1/8" stripe around bottom of shoe.



Jewelry— Approved

- Students may wear:
 - Small earrings
 - One bracelet
 - One necklace long enough to be tucked under their shirt





Jewelry – **Not** Approved

- Hoops or dangling earrings are discouraged due to being a hazard during recess periods.
- No pop culture jewelry is permitted.
- No choker necklaces are permitted.

Watches— Approved

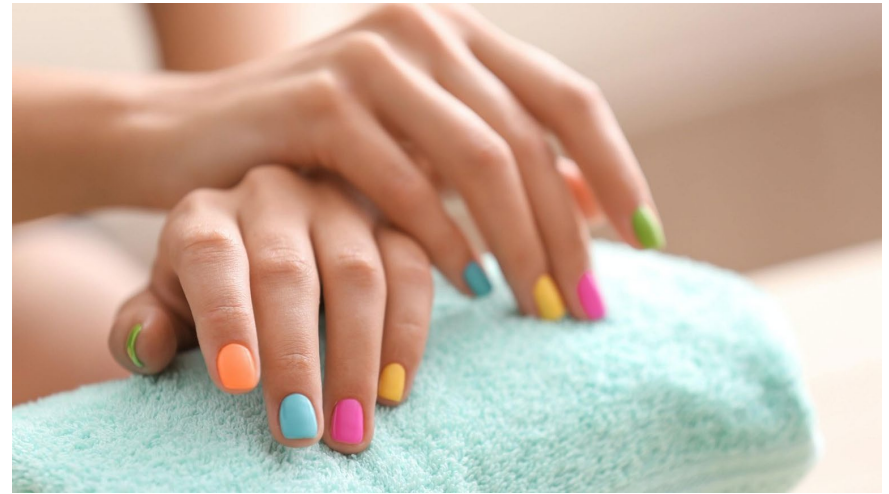
A watch that can only tell
time and has no other
function





Watches— Not Approved

Smart watches- watches that have more functions than simply telling the time



Nail Polish

- Students may wear colored nail polish.

Approved Backpacks





Backpacks—
Not
Approved



All Backpack
Accessories—
Not
Approved






Approved
Lunch
Boxes

Start and End Times

- Regular School Day 7:50am – 3:00pm
- Half Day Kindergarten 7:50am – 11:50am
- Wednesdays 7:50 – 1:25pm
- Half Days 7:50am – 11:50am



Student Drop-off and Pick-Up

- Please do not get out of your cars in the pick-up line.
 - Please take the time to teach your child how to buckle/unbuckle themselves in the car
 - Teachers CANNOT help children get buckled
 - **Homework Club** is available in the morning for parents who need to get to work early. It will run from 7am-7:20am. There is a charge for this club.
 - **Athenaeum** is our Great Hearts after-school care option.
-



BULLARD AVE.

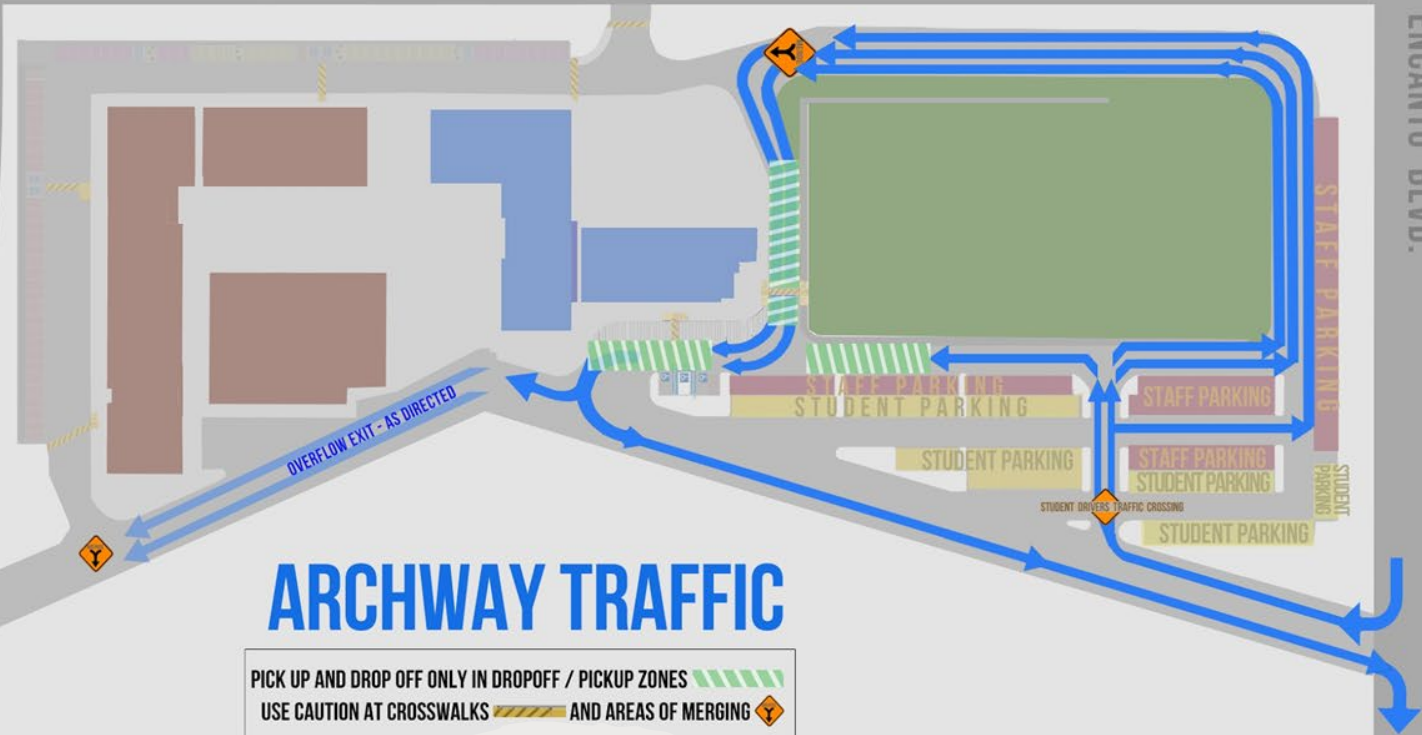


PALM LANE

BULLARD AVE.



ENCANTO BLVD.



ARCHWAY TRAFFIC

PICK UP AND DROP OFF ONLY IN DROPOFF / PICKUP ZONES
USE CAUTION AT CROSSWALKS AND AREAS OF MERGING

Student Drop-off and Pick-Up

Homework Time Estimates

The *average* student should complete the assignment within the times below. These are the Great Hearts network recommendations for each grade level. Strong students may take less time and students who struggle considerably may take more.

Grade Level	Homework	At Home Assigned Reading	Overall Homework Time
K	10 – 15 minutes	20 – 30 minutes	30 – 45 minutes
1 st	20 – 25 minutes	20 – 30 minutes	40 – 55 minutes
2 nd	30 – 35 minutes	20 – 30 minutes	50 – 65 minutes
3 rd	40 – 45 minutes	20 – 30 minutes	60 – 75 minutes
4 th	50 – 55 minutes	20 – 30 minutes	70 – 85 minutes
5 th	60 – 65 minutes	20 – 30 minutes	80 – 95 minutes



Items to Purchase over the Summer



Book List



Supplies



Uniforms

Archway Trivium Student A-Z Reading Goals

GRADE	Target Year-End									Minimum Year-End*
	Sep	Oct	Nov	Dec	Jan	Feb	Mar	Apr	May	
Kinder	AA	A	B	C	D	E	F	G	H	D
1st	H	I	J	K	K	L	L	M	M	K
2nd	M	N	N/O	O	high O/Low P	P	P/Q	Q	R	O
3rd	R	S	S	T	T	U	U	V	V	T
4th	V	W	W	X	X	X	Y	Y	Y	X
5th	Y	Y	Y	Z	Z	Z	Z	Z	Z	Y

*Minimum Year End: Child may really struggle to succeed in the next grade level if he/she is below this reading level. If a student is not anticipated to reach this reading level by the end of the school year, he or she should have been attending reading tutoring for the year, after the teacher and parent discuss a reading intervention plan. Students who do not reach this level may be considered for retention, however it does not mean they will be automatically retained. Many factors are considered when retention is being considered.


Reading Targets and Summer Practice

Phonogram Practice:

- Download App “Phonograms by Spalding Int.” (Use/practice Oral Phonogram Practice/Review. do not use the Written Phonogram practice if your child has not yet had Spalding instruction.)
- Go to the ACT website. Click on “Academics” then Curriculum”. Go to the bottom of page and you will see a link for all the Spalding phonograms that our students learn. You will hear the correct sound and also see how each letter is written. (The woman on these videos is the Great Hearts Spalding coach and she visits our campus and gives feedback to our teachers on a monthly basis.)

Archway Tips for Reading With Your Primary Age Child

- Have your child read aloud to you every night (once he/she has learned enough phonograms to blend into words).
- Choose a quiet place, free from distractions, at which your child may do his nightly reading assignments so he can focus. Children read better when they are in a calm environment with few distractions. At home, make sure your child is reading in an area with low noise and low traffic.
- To check your child's understanding of what he is reading, occasionally pause and ask your child questions about the characters and events in the story.
- When your child is trying to sound out an unfamiliar word, give him time to do so. Remind your child to look closely at the first letter or letters of the word.



We are a Community of teachers, staff, students and families

- Fun, Community Building Events put on by the PSO
 - Family Game Nights
 - 5K Run the Virtues
 - PSO President
 - Classroom Parents, Classroom Curricular Events
 - Volunteer Training/Volunteer Possibilities
 - Mandatory requirements before volunteering:
 - Raptor Clearance
 - Complete the Archway Trivium Volunteer Training
-

Time & Financial Investments

Your Investment of Time: We need your investment of time, in our classrooms, lunchroom and at home. Please contact our PSO for a list of these opportunities.

Your Investment of Financial Support: As a Charter school, we receive about \$2,500 less funding per student than District Schools. We ask that every parent make a donation of \$1,500 per child, to fill this funding gap to our community investment fund. We also ask every family to participate in the public school tax credit fund which can provide our school with up to \$400 at zero cost to you!

Reasons to Love Great Hearts

- Family Giving and Community Engagement Officer– Aydin Martin
- How Community Investment helps your child
- How tax credits help your child